



Please find below a selection of our fast moving products, for full product list and further information please get in touch with us on +44 (0)1925 232662 or email us at [mail@alliedexport.co.uk](mailto:mail@alliedexport.co.uk)



## SECTION 5

# SPEEDWAY CABLE LADDER SYSTEMS

The Speedway Cable Ladder System represents a major advance in cable ladder design, providing faster and easier installation, a unique coupler locking system and a comprehensive range of accessories.

The Speedway Cable Ladder System is subject to Registered Design, Trade Mark and Patent considerations and conforms to BS EN 61537:2007.

### SPEEDWAY – FOR WHEN IT MATTERS

#### THE LADDER SYSTEMS

are manufactured in 3 heights:

SPEEDWAY 4 (SW4) - 110mm overall height

SPEEDWAY 5 (SW5) - 125mm overall height

SPEEDWAY 6 (SW6) - 150mm overall height

#### SYSTEM ATTRIBUTES

##### Special Profiled Side Section:

1. Enhanced structural rigidity.
2. Increased internal width for cables.
3. High performance coupling.
4. Safety edge.

##### Slotted Side Section:

1. Allows faster installation as the ladder can be cut to any length and coupled without on-site drilling.
2. Fixing to ladder sides.
3. Reduced weight.

#### Shallow Channel Rungs:

1. The welding of the rungs to the lowest point of the side section ensures maximum loading height.
2. High strength even in the widest ladders.
3. Use of every known type of cleat, tie and bonding with infinite adjustment.
4. Rungs alternately inverted (on lengths) permitting suspension of light fittings etc. from underside.

Speedway Cable Ladder is supplied in various materials and finishes:

#### LADDER & FITTINGS


 Hot dip galvanized Vantrunk Extreme Steel (Steel BS EN 10025-2 and Galvanising BS EN 1461:2009)

#### COVERS & ACCESSORIES

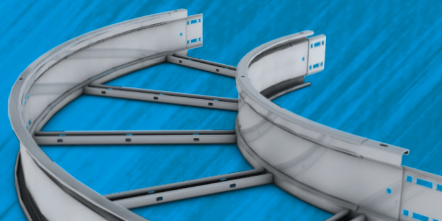
 Hot dip galvanized Mild Steel (Steel BS EN 10111 and Galvanising BS EN 1461:2009)

#### LADDER, FITTINGS, COVERS & ACCESSORIES

 Hot dip deep galvanized after manufacture to BS EN 1461:2009

 Stainless steel grade 1.4404 (316 marine) to BS EN 10088-2:2005

ACCREDITED TO THE  
FOLLOWING STANDARDS

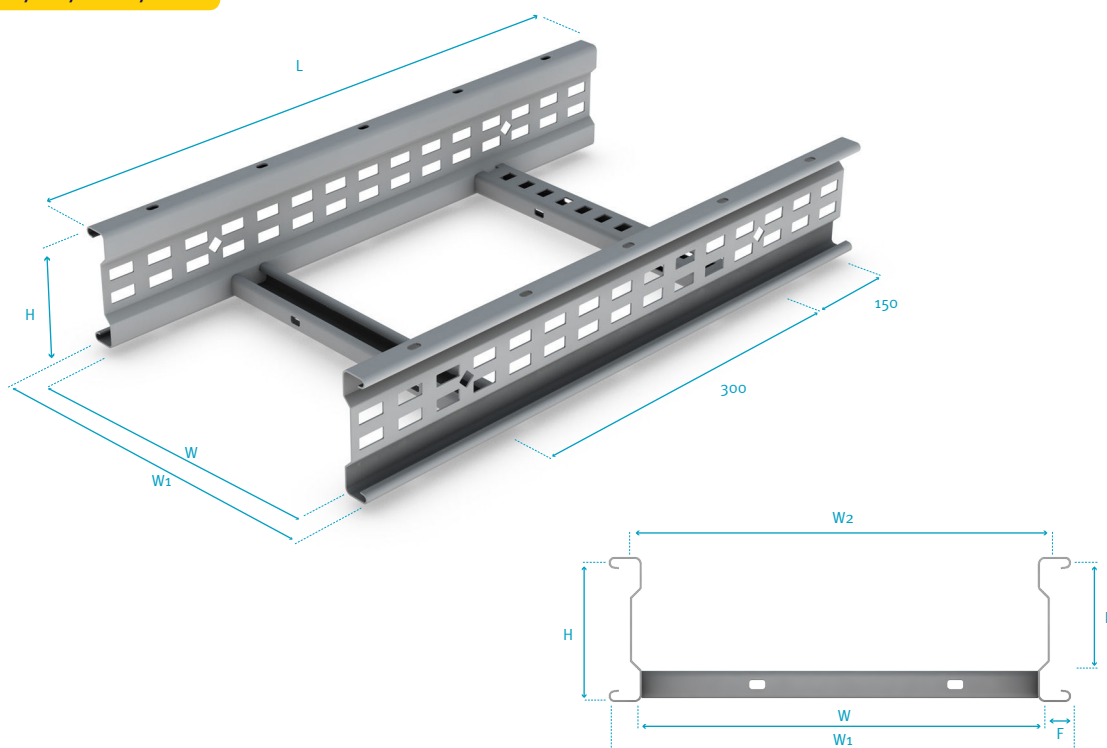




## Speedway SW4 Cable Ladder

Speedway 4 (SW4) Medium Duty Cable Ladder is manufactured in 3.0m lengths as standard with 6.0m lengths to order. The cable ladder is available in standard widths of 150mm, 300mm, 450mm, 600mm, 750mm and 900mm, although other widths up to 1050mm are available to order. Rung spacing is 300mm as standard.

Ref.SW4/SL3/Width/Finish



Part Number	No. of Rungs	Dimensions (mm)				Weight (kg)
		W	W1	L	H	
SW4/SL3/150/○	10	150	200	3000	110	13.93
SW4/SL3/300/○		300	350			15.55
SW4/SL3/450/○		450	500			17.17
SW4/SL3/600/○		600	650			18.79
SW4/SL3/750/○		750	800			23.12
SW4/SL3/900/○		900	950			25.28

Height	H	110mm
Loading Depth	D	85mm
Ladder Width	W	100mm to 1050mm
Maximum Internal Width	W2	W + 14mm
Overall Width	W1	W + 50mm
Flange Width	F	25mm

○= Select a Finish & Material refer to Page 82

Weights shown are for standard hot dip galvanised finish only.

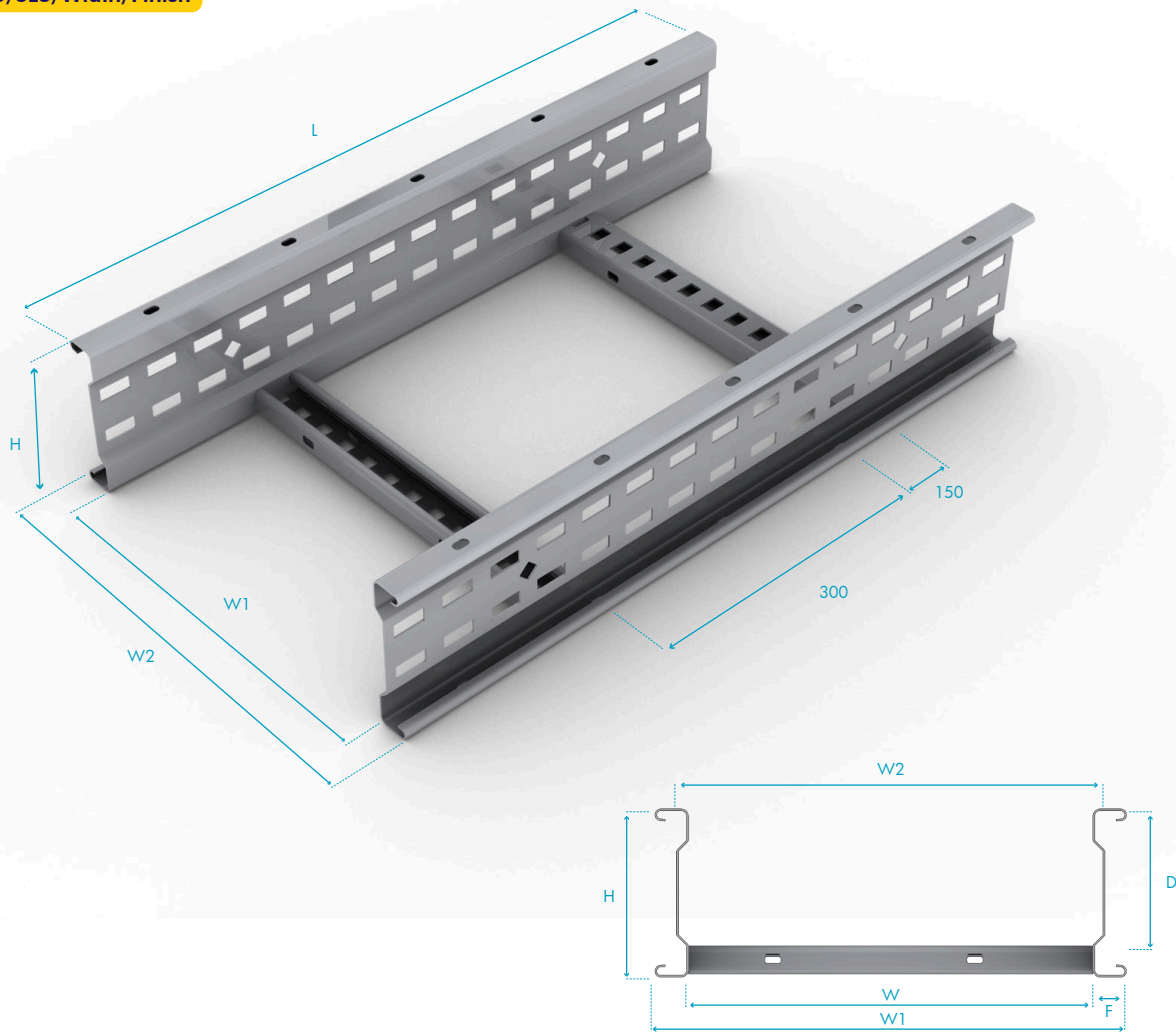
Supplied with:



Speedway SW5 Cable Ladder

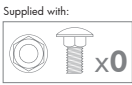
Speedway 5 (SW5) Heavy Duty Cable Ladder is manufactured in 3.0m lengths as standard with 6.0m lengths supplied to order. The cable ladder is available in standard widths of 150mm, 300mm, 450mm, 600mm, 750mm, 900mm and 1050mm, although other widths up to 1500mm are available to order. Rung spacing is 300mm as standard.

Ref.SW5/SL3/Width/Finish



Part Number	No. of Rungs	Dimensions (mm)				Weight (kg)
		W	W1	L	H	
SW5-SL3-150-○	10	150	200	3000	125	18.53
SW5-SL3-300-○	10	300	350			20.15
SW5-SL3-450-○	10	450	500			21.77
SW5-SL3-600-○	10	600	650			23.40
SW5-SL3-750-○	10	750	800			27.72
SW5-SL3-900-○	10	900	950			29.88
SW5-SL3-1050-○	10	1050	1100			32.05

Height	H	125mm
Loading Depth	D	100mm
Ladder Width	W	100mm to 1500mm
Overall Width	W1	W + 50mm
Maximum Internal Width	W2	W + 14mm
Flange Width	F	25mm



○= Select a Finish & Material refer to Page 82

Weights shown are for standard hot dip galvanised finish only.

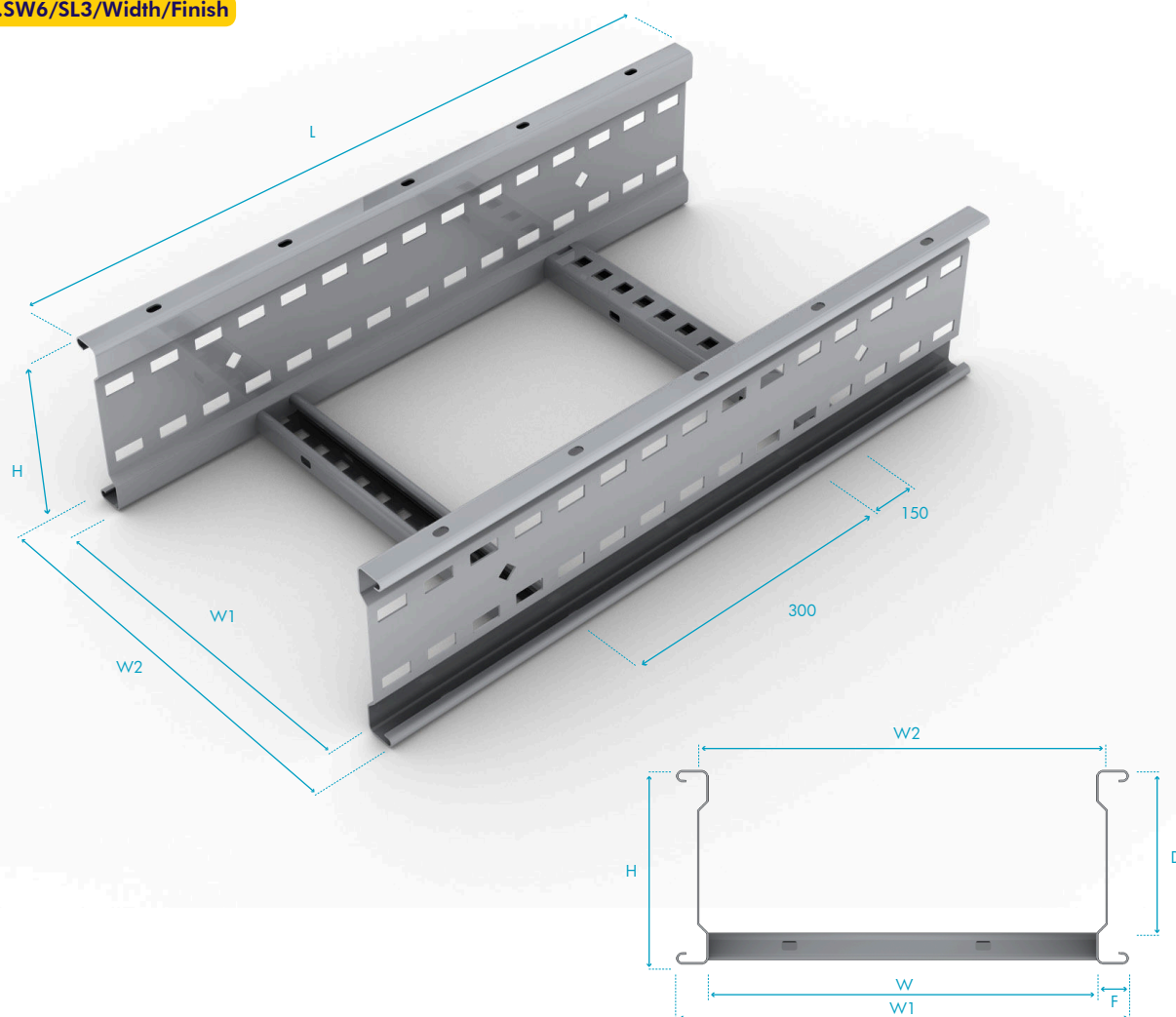




## Speedway SW6 Cable Ladder

Speedway 6 (SW6) Extra Heavy Duty Cable Ladder is manufactured in 3.0m lengths as standard with 6.0m lengths supplied to order. The cable ladder is available in standard widths of 150mm, 300mm, 450mm, 600mm, 750mm, 900mm and 1050mm, although other widths up to 1500mm are available to order. Rung spacing is 300mm as standard.

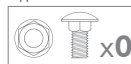
Ref.SW6/SL3/Width/Finish



Part Number	No. of Rungs	Dimensions (mm)				Weight (kg)
		W	W1	L	H	
SW6-SL3-150-○	10	150	200	3000	150	21.63
SW6-SL3-300-○	10	300	350			23.79
SW6-SL3-450-○	10	450	500			25.95
SW6-SL3-600-○	10	600	650			28.11
SW6-SL3-750-○	10	750	800			30.28
SW6-SL3-900-○	10	900	950			32.44
SW6-SL3-1050-○	10	1050	1100			34.60

Height	H	150mm
Loading Depth	D	125mm
Ladder Width	W	100mm to 1500mm
Overall Width	W1	W + 50mm
Maximum Internal Width	W2	W + 14mm
Flange Width	F	25mm

Supplied with:



○ = Select a Finish & Material refer to Page 82

Weights shown are for standard hot dip galvanised finish only.

## Cable Ladder Fitting with Speedlock Integral Coupler

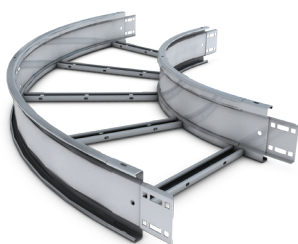
Fast fit, total cost saving through reduction of the number of couplers and fixings required. The integral coupler has a formed shape which increases strength and rigidity and reduces joint hinging.



### Flat Elbow

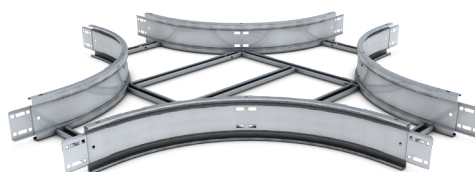
30°, 45°, 60°, 90°

Ref.SW-/FE Angle/Width  
/Radius/Finish



### Cross

Ref.SW-/C/Width/Radius/Finish

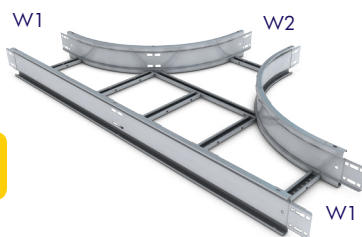


### Equal Tee

Ref.SW-/ET/Width/  
Radius/Finish

Can also be manufactured unequal.

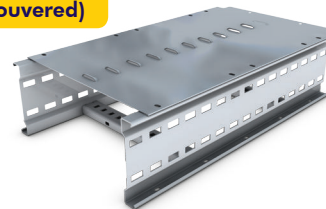
Ref.SW-/UET/W1/W2/  
Radius/Finish



### Covers

SW/CC/SL1.5/Width/Finish (Closed)  
SW/CL/SL1.5/Width/Finish (Louvered)

Supplied c/w fixings.  
Please note straight ladder covers are supplied in 1.5m lengths.



### Riser (Outside)

30°, 45°, 60°, 90°

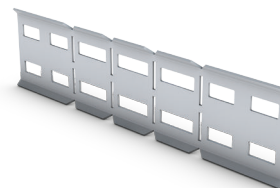
Ref.SW-/OR Angle/Width  
/Radius/Finish



### Short Adjustable Coupler

Ref. SW-/SAC/Finish

Overall length 300mm.  
Used as an alternative to Reducers/unequal tees.  
Supplied c/w fixings.



### Riser (Inside)

30°, 45°, 60°, 90°

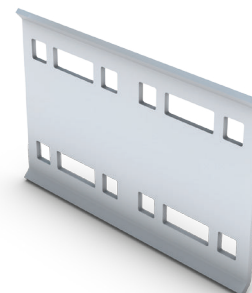
Ref.SW-/IR Angle/Width  
/Radius/Finish



### Straight Coupler

Ref.SW-/CS/Finish

Sold in pairs.  
Supplied c/w fixings.  
1 Pair per ladder.

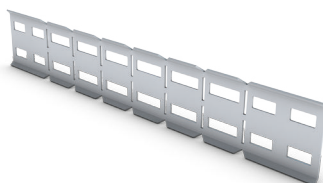




## Long Adjustable Coupler

Ref.SW-/LAC/Finish

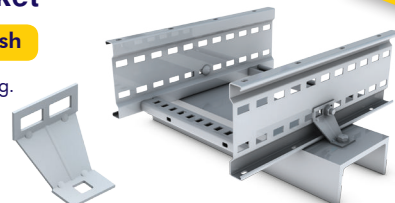
Overall length 450mm  
Used as an alternative to Reducers/ unequal tees.  
Supplied c/w fixings.



## Adjustable Fixing Bracket

Ref.SW-/AFB/Finish

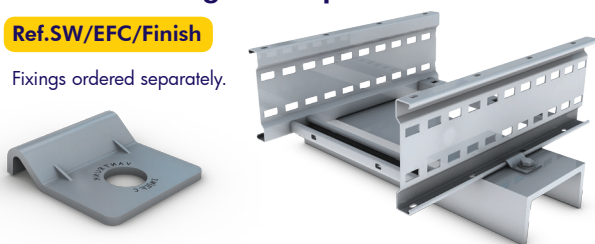
Supplied c/w 1 fixing.



## External Flange Clamp

Ref.SW-/EFC/Finish

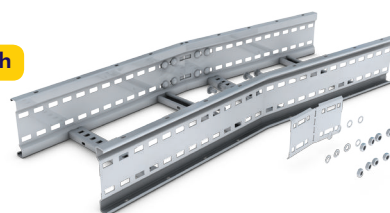
Fixings ordered separately.



## Horizontal Adjustable Coupler

Ref.SW-/HAC/Finish

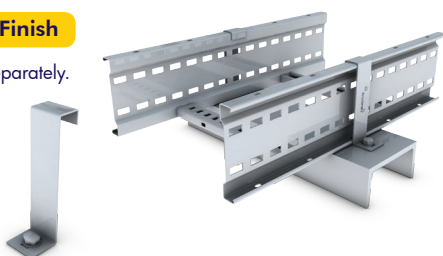
Each c/w fixings.



## Hold Down Bracket

Ref.SW-/HDB/Finish

Fixings ordered separately.

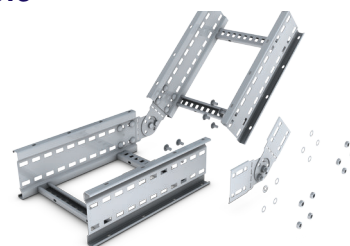


## Vertical Adjustable Coupler

Ref.SW-/VAC/Finish

Each c/w fixings.

Identical for sw4 & sw5 order  
as: Sw4/5/vac/finish  
for sw6 order  
as: sw6/vac/finish.



## Straight Ladder Divider

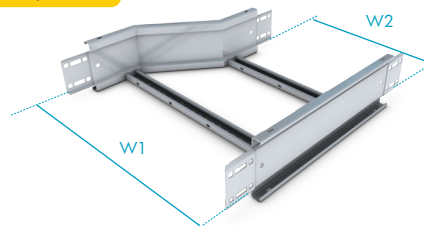
Ref.SW-/SL/1.5/Finish

Straight ladder dividers  
are 1.5m long.  
Fixings separate.



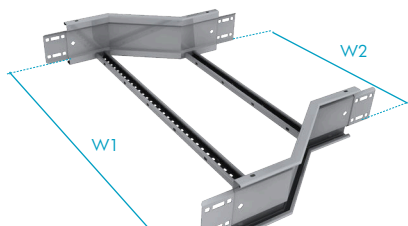
## Reducer Left Hand

Ref.SW-/RL/W1/W2/Finish



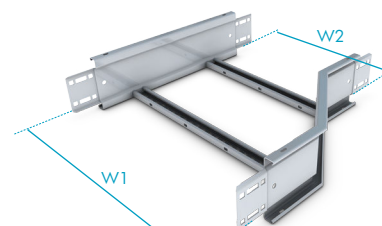
## Straight Reducer

Ref.SW-/RS/W1/W2/Finish



## Reducer Right Hand

Ref.SW-/RR/W1/W2/Finish



## Earth Braid

Ref.EBS01 (M10 BRAID)



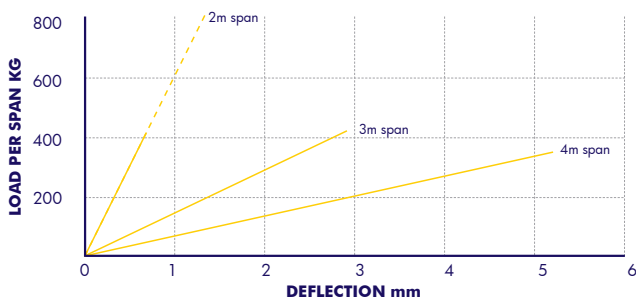
The Speedway Earth Bonding Strap (EBS01) is designed for use in installations where an additional means of earthing or electrical bonding is specified. The Speedway Earth Bonding Strap comprises of a 16mm<sup>2</sup> tinned copper braid crimped into M10 tinned copper end connectors. The Speedway Earth Bonding Strap is common to Speedway SW4, SW5, & SW6.

Pre-punched holes for fixing the earth bonding strap are located at each end of the ladder and fittings.

These illustrated graphs are indicative of the performance of Speedway SW4, SW5 and SW6 Cable Ladder in a typical continuous beam installation. The loading figures have been determined by actual load tests. For detailed loading data please contact our technical department.

### Speedway SW4

#### Load Deflection Data - Continuous Beam

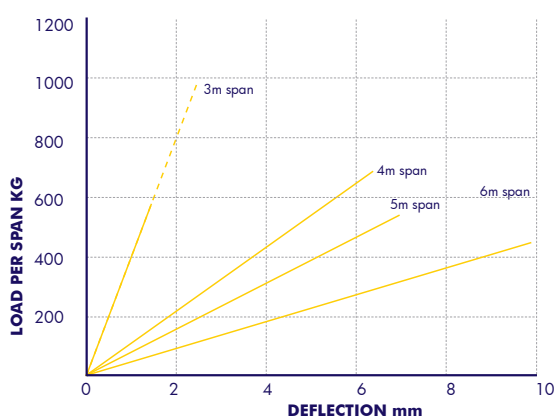


#### Key

- Applicable for full range of standard widths.
- - - Applicable for widths 150-600mm inc.

### Speedway SW5

#### Load Deflection Data - Continuous Beam

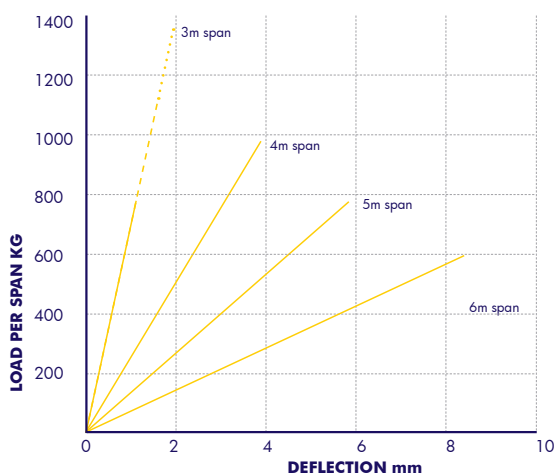


#### Key

- Applicable for full range of standard widths.
- - - Applicable for widths 150-750mm inc.

### Speedway SW6

#### Load Deflection Data - Continuous Beam



#### Key

- Applicable for full range of standard widths.
- - - Applicable for widths 150-750mm inc.
- ..... Applicable for widths 150, 300 & 450mm inc.

#### Speedway Cable Ladder System – Standard Material Gauges

Ladder Type	Material & Finish	Side Wall Gauge	Rung Gauge						
			150 mm	300 mm	450 mm	600 mm	750 mm	900 mm	1050 mm
Speedway SW4	GY	1.5mm	1.5mm				2.0mm		
	SS		1.5mm						
	GX		1.5mm						
Speedway SW5	GY	1.5mm	1.5mm			2.0mm			
	SS	2.0mm	2.0mm						
	GX	2.0mm	1.5mm						
GY	2.0mm								
SS									
Speedway SW6	GX								

GY - Steel/Hot Dip Galvanized SS - Stainless Steel GX - Silicon Rich/Deep Galvanized



# **LOK DOWN**

## **WITH THE SPEEDLOK INTEGRAL COUPLER**

All Speedway fittings are manufactured with the Speedlok Integral Coupler as standard; this represents a major advance in modern cable management design, Speedlok Integral Couplers reduce:

- The number of fixings required to connect the ladder and fitting, in turn reducing the ladder to fitting connection by 67%
- The overall installation time, weight and cost.

UNITRUNK  
**SPEEDLOK**  
QUICKFIT CABLE LADDER

**FAST FITTING  
& STRONG**



**SEE PAGE 82  
FOR DETAILS**

